

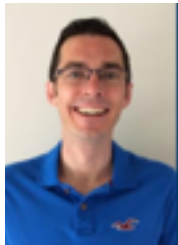
Gulf Harbour School Newsletter

WELCOME BACK

The new school year has started and there are lots of new faces to welcome into the GHS whanau. We have 52 children that have started with us in 2017 from new entrants up to Year 8. This is really exciting and as our school roll continues to grow we also welcome 6 new teachers to our team. We welcome back Laura Thrush from maternity leave.



Tammy
Jenkins



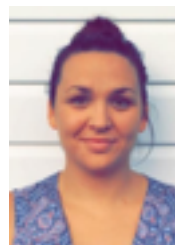
Nathan
Hanwell



Rachel
Lamason



Robyn
Shore



Stephanie
Williams



Karen
Holleron

The whole school key understanding for 2017 is:

AS A CITIZEN IN MY WORLD I AM A PARTICIPATOR AND A CONTRIBUTOR



During Term 1 the learning will be based around our children finding out about themselves as learners and how to learn collaboratively. We will be starting with teaching our children about high behaviour expectations at GHS - what does this look like? We will be unpacking our school values and every class will also be developing their own Class Treaty.

For 2017 we will be focusing as a whole school on Math as a key improvement area. This will involve lots of professional development for staff and Athletics being promoted and used in all classrooms. From Year 2, in week 3 of this term we will be launching our 'MATHATHON' challenge. Children will be sent home with math tasks and activities to complete over several weeks. More information will be sent home shortly.

SCHOOL HATS



Please remember that all children should now be wearing the **new** GHS uniform including the school bucket hat in Term 1.

PLAIN BLACK FOOTWEAR

All children are expected to come to school and leave



wearing **PLAIN** black footwear. We are aware that some families may have bought shoes at the end of last year and so ask that by the end of Term 1 this uniform expectation is met.

MEET THE TEACHER EVENING

We are holding a get together on THURSDAY 16TH FEBRUARY.

Families are invited to bring a picnic and join us on our school field from 5.30pm. We will have a bouncy castle and some team games for everyone to join in with. At 6.30pm you will be invited to a meeting hosted by teachers from your child's Team. These meetings will repeat again at 7.10pm in case you have a child that is part of another team or if you are running late.



It would be great to see you all!!

IMPORTANT DATES FOR YOUR DIARY

Please pencil the following dates into your diary:

Every Tuesday & Friday	9:10 - 9:20am - all welcome	Whole School Fitness
Thursday 16th February	Meet the Teacher evening (5.30pm)	
Wednesday 22 February	First Board of Trustee meeting for 2017 - visitors welcome (6.30pm)	
Friday 24 February	Year 5-8 swimming Sports - Stanmore Bay Leisure Centre 9.00-2:30pm. (please fill in the forms that your child will bring home today)	
Monday 27 February	Mobile dental unit at school (until the end of Term 1)	
Tuesday 28 February	House Leadership Boot Camp (Nominated Yr 5 - 8 children)	
Thursday 2 March	House Leadership Boot Camp	
Friday 3 March	House Leadership Boot Camp	
Tuesday 28 February	Community Sports Meeting 7:00pm - 8:00pm - School Staffroom	
Sunday 27 March	Weetbix Triathlon - GHS teams to enter	
Thursday 30 March	Small Ball games festival with end of term house celebration Mathathon celebration (5.00 - 8.00pm)	
Ultimate Frisbee	Date to be confirmed	
Coast Swimming Sports	Date to be confirmed.	

VOLUNTEERS NEEDED



After having to cancel our school disco in Term 4 we would love to hold a disco for our wonderful children this term. Please if you are willing to help run this event email me at m.crosbie@ghs.school.nz or pop into the main office.

We also need help carrying out admin tasks e.g. photocopying, making up resources etc. Again, if this something you could help us with we would greatly appreciate it, please just get in touch.

SCHOOL DONATIONS

School donations are so important to us. Being a decile 10 school we receive very little financial assistance from the Ministry and heavily rely on parent donations to cover the cost of education. Last year we received \$42 000. This money was used to fund additional learning support staff and to subsidise school trips and camps. In 2017 our voluntary donation fee for the whole year is \$200 for the eldest child and \$100 each for other siblings. If every family paid their donation this would give the school \$75 000 - with this extra money we could expand the curriculum opportunities currently on offer at our school and put more money towards our school hall.

Payment options:

We have an online school shop which allows parents to 'purchase' online all the various trips, events and activities run by the school. Your donation can also be paid through the school shop located on our school web site www.gulfharbour.school.nz.

Payments can also be made at the school office.

A 10% discount will be applied to all subsequent school purchases once the donation has been received.

AGAIN - WE THANK YOU FOR YOUR CONTINUED SUPPORT

UNIFORM DONATIONS



We are expecting all children that attend our school to wear the new GHS uniform, however we do appreciate that this can be costly. We would really like to set up a second hand uniform shop where we could on sell uniform that is still in good condition but that some children may have grown out of.

Please - if you have any of the new style uniform that your child may have grown out of from last year or you are leaving the school, we would be most grateful for any donations.

GHS BIKE TRACK

It has been great to see so many of our families within the community using our school bike and pump track. The track is now officially open with obstacles and challenges for all children (and adults) to enjoy.

As this is a whole new venture for our school we are currently trialling a management system in order to keep our children safe. For Term 1 the following timetable will apply for lunchtimes only (this will be supervised by a member of staff):

Monday lunchtime - Year 1 and 2

Tuesday lunchtime - Year 3 and 4

Wednesday lunchtime - Year 5

Thursday lunchtime - Year 6

Friday lunchtime - Year 7 and 8

Individual classes may also use the bike track at different times during the term. Letters will be sent home as and when this happens.

We ask that all children bring locks for their bikes as we cannot take responsibility for them and it is compulsory that every children wears a helmet when biking.



